

CATALYST MINDER

AUTOMATICALLY LOG CATALYST DELTA P

CATALYTIC COMBUSTION'S CATALYST MINDER ALLOWS YOU TO MEASURE AND RECORD THE DATA NEEDED TO DEMONSTRATE COMPLIANCE WITH RICE MACT'S RULES FOR CATALYST PRESSURE DROP.

FEATURES

- ◆ RUGGED INDUSTRIAL GRADE DIFFERENTIAL PRESSURE SENSOR
 - ΔP RANGE OF 0-10 INCHES H₂O
 - ABLE TO WITHSTAND A 60 PSI PRESSURE SPIKE
 - MOISTURE SEPARATOR SYSTEM WITH PLC CONTROLLED PURGES PROTECTS SENSOR FROM WATER IN THE EXHAUST GAS

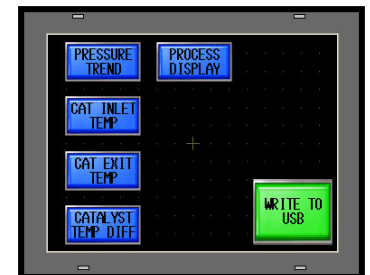
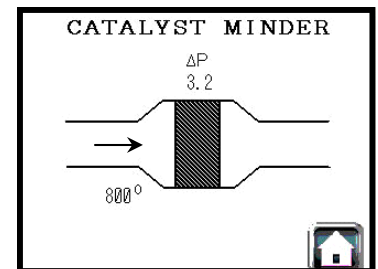
- ◆ INTERNAL DATA RECORDER
 - ALLEN BRADLEY MICROLOGIX 1100 PLC BASED
 - 6 DISCRETE INPUTS/4 DISCRETE (ALARM) OUTPUTS
 - 4" COLOR TOUCH SCREEN DISPLAY
 - DISPLAYS CURRENT PROCESS VALUES
 - TREND SCREENS ALLOW YOU TO SCROLL THROUGH HISTORICAL DATA
 - USB PORT FOR ON-SITE DATA EXTRACTION
 - RECORDER MEMORY CAN HOLD UP TO 6 WEEKS OF DATA

- ◆ SCADA READY
 - SERIAL COMMUNICATIONS INCLUDING
 - DH-485, AB-DF1, MODBUS RTU MASTER/SLAVE
 - ETHERNET-SERIAL CONVERTER OPTION AVAILABLE

- ◆ DATA IS SAVED IN .CSV FORMAT, ALLOWING EASY ARCHIVING OR CHART/GRAPH VIEWING WITH EXCEL OR OPEN OFFICE

- ◆ ELECTRONICS CONTAINED IN A 20" x 20" x 8", NEMA 4 (WEATHER-PROOF) ENCLOSURE

- ◆ 24 VDC, 3.5 AMPS POWER REQUIREMENT PERMITS HOOK-UP TO EXISTING ENGINE POWER SYSTEM



OPTIONS

- ◆ TEMPERATURE MODULE TO RECORD CATALYST INLET (AND/OR OUTLET) TEMPERATURE
 - TYPE K THERMOCOUPLE
 - SAME DATA LOGGING CAPABILITIES AS FOR ΔP

- ◆ MODEM FOR DATA TRANSMISSION WHEN SCADA SYSTEM IS NOT AVAILABLE
 - LAND LINE, CELLULAR OR SATELLITE

